

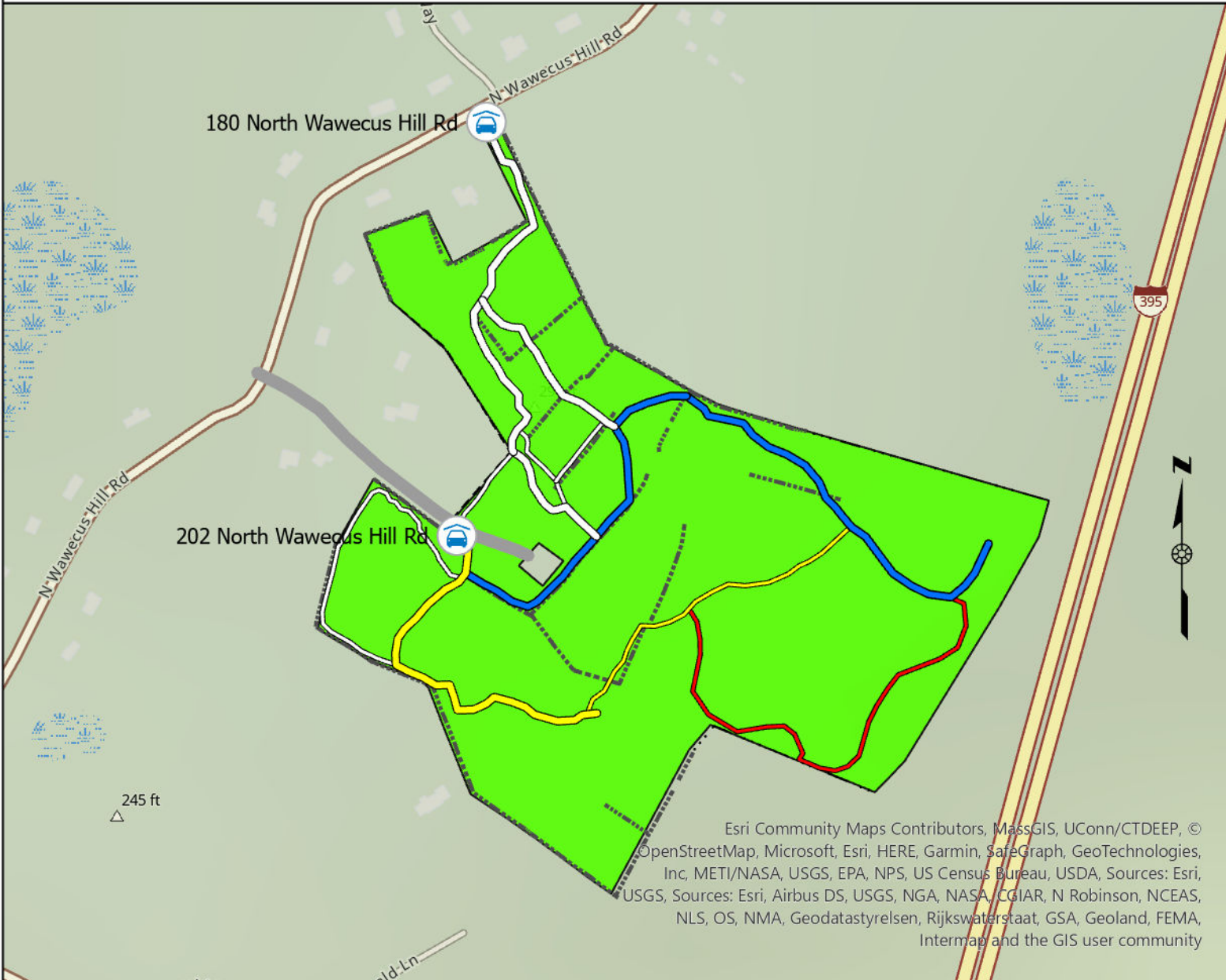


Avalonia Land Conservancy
 P.O. Box 49, Old Mystic, CT 06372
<https://avalonia.org>

Cedar Wood Preserve

47.27 Total Acres

Norwich



Legend

- Parking lot
- Cell Tower Road
- Cedar Wood Roads**
 - Blue
 - White
 - yellow
- Cedar Wood Trails**
 - Red
 - Yellow
 - White
- Avalonia Property

Notes

Avalonia Land Conservancy properties are open for public access. Dogs must remain on a leash at all times.

Do not disturb stone structures or remove plants or other artifacts from property.

Load free "ArcGIS Field Maps" app and search for "Avalonia Online Map" to view our properties and follow trails interactively.



Copyright Avalonia Land Conservancy
 Map Date - January 31, 2023

This map is intended for general guidance and recreational use of the property only. Data shown on this map may not be complete or current. Hikers do so at their own risk.

Esri Community Maps Contributors, MassGIS, UConn/CTDEEP, © OpenStreetMap, Microsoft, Esri, HERE, Garmin, SafeGraph, GeoTechnologies, Inc, METI/NASA, USGS, EPA, NPS, US Census Bureau, USDA, Sources: Esri, USGS, Sources: Esri, Airbus DS, USGS, NGA, NASA, CGIAR, N Robinson, NCEAS, NLS, OS, NMA, Geodatastyrelsen, Rijkswaterstaat, GSA, Geoland, FEMA, Intermap and the GIS user community