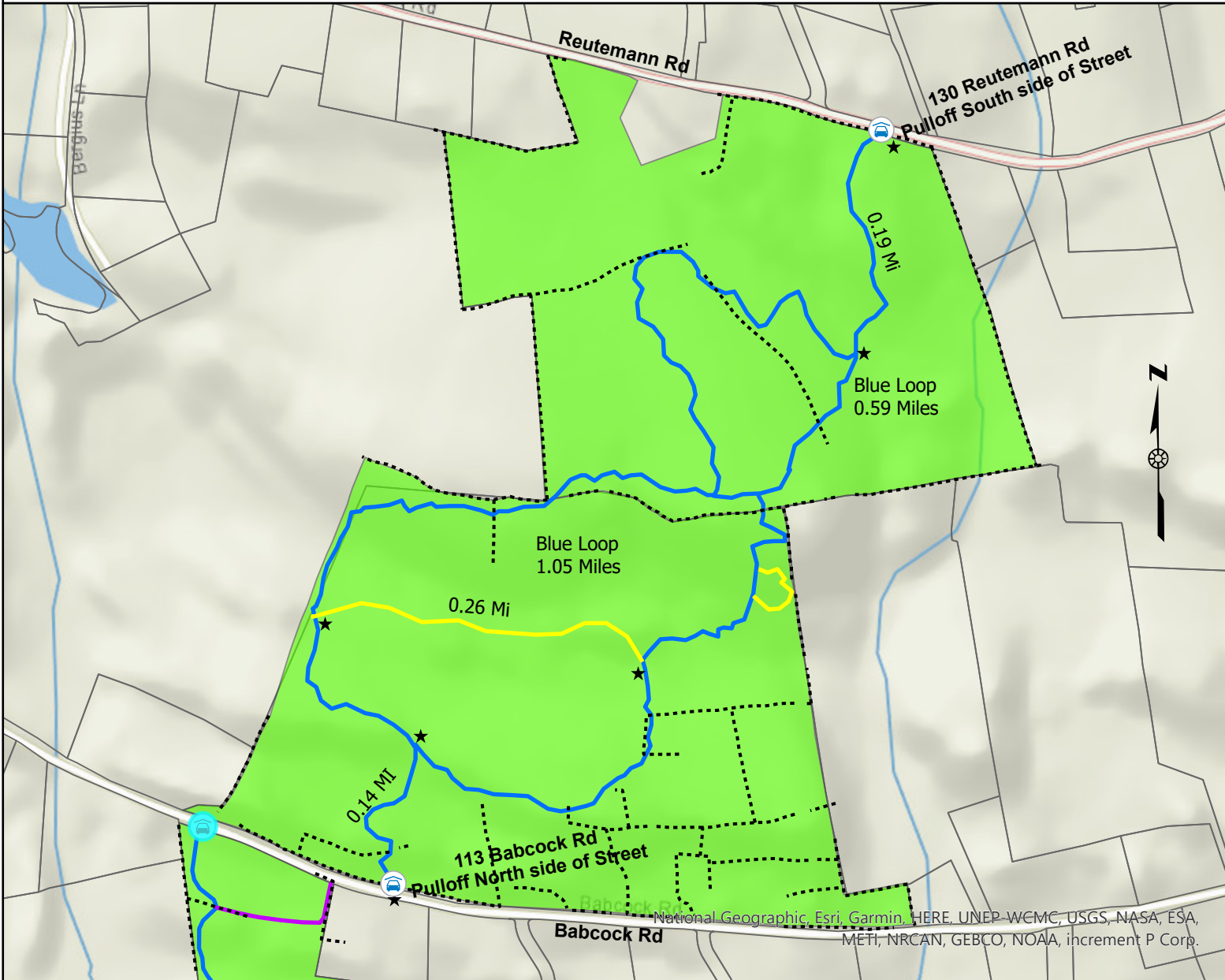
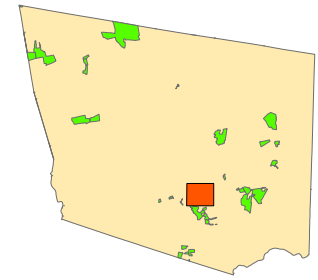




**Avalonia Land Conservancy**  
 P.O. Box 49, Old Mystic, CT 06372  
<https://avalonia.org>

# Erisman Woodlands/Babcock Ridge North Stonington

**136.48 Total Acres**



## Legend

Avalonia Properties

## Trails

Blue

Unmarked

Yellow

Stonewalls

## Parking

On-site Parking

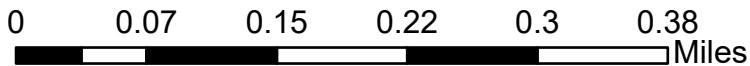
Street

## Notes

Avalonia Land Conservancy properties are open for public access. Dogs must remain on a leash at all times.

Do not disturb stone structures or remove plants or other artifacts from property.

Load free "ArcGIS Explorer" app and search for "Avalonia Online Map" to view our properties and follow trails interactively.



Copyright Avalonia Land Conservancy  
 Map Date - March 6, 2021

**Parking addresses are for navigation use only. Some are private property near parking site. This map is intended for general guidance and recreational use of the property only. Data shown on this map may not be complete or current. Hikers do so at their own risk.**

National Geographic, Esri, Garmin, HERE, UNEP-WCMC, USGS, NASA, ESA, METI, NRCAN, GEBCO, NOAA, increment P Corp.